

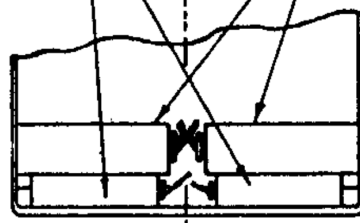
NOTES: 1. RESISTORS ARE IN OHMS. CAPACITORS ARE IN MICRO MICRO FARADS, UNLESS OTHERWISE SPECIFIED.
 2. SWITCH S-1 IS MOUNTED ON THE BACK OF THE VOLUME CONTROL.
 3. R-7, C-6, C-7 ARE BUILT INTO END LF TRANSFORMER TM2-13
 4. ALL RESISTORS ARE 1/2W - ALL MICA CAPACITORS 500V - ALL PAPER CAPACITORS 200V - UNLESS OTHERWISE MARKED.
 5. C-16A, C-16B, C-16C, C-16D ARE A 4-SECTION ELECTROLYTIC CAPACITOR BLOCK 100 WV. DC.
 6. INTERMEDIATE FREQUENCY IS 455 KC.

110-120V AC-DC INPUT

DPDT SWITCH SHOWN IN 'ELECTRIC' POSITION

4.5V "A" E. R. No. 746
 45V "B" E. R. No. 488

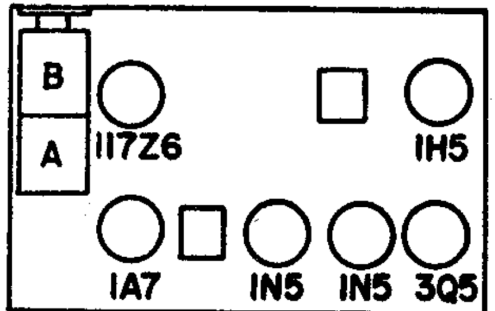
ASSEMBLE WITH PLUG ON THIS SIDE



SECTION A-A

NOTE: BE SURE TO REMOVE BOLT FROM BOTTOM OF CABINET BEFORE ATTEMPTING TO INSERT BATTERIES

POSITION OF BATTERIES



LOCATION OF TUBES